



SISMA

# G. GIOANOLA

METERING EFFICIENCY

## SUPER DRY METER PRE-EQUIPPED FOR W-MBUS MODULS

360° ROTATING COUNTER  
8 ROLLS - DRY DIAL



### MODELS

USF-P-8 WMB/15 – USC-P-8 WMB/15  
USF-P-8 WMB/20 – USC-P-8 WMB/20



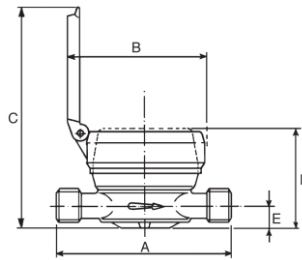
- ❖ Single jet water meter, straight reading on 8 numbered drums: 5 black for cubic meters and 3 red for liters
- ❖ DRY dial suitable for use with turbid and calcareous water and in hard water areas - 360° rotating dial for easy reading in any position
- ❖ Pre-equipped for installation of data communication modules M-BUS wired, M-BUS wireless and LoRaWan
- ❖ Models USF-P-8 WMB DN 15 and DN 20, temperature class T30 and T50, measuring range starting from R80
- ❖ Models USC-P-8 WMB DN 15 and DN 20, temperature class T70 and T90, measuring range starting from R80
- ❖ **U0-D0**: Straight pipe not required upstream or downstream of meter
- ❖ All models are **MID** approved according to the European Directive **2014/32/UE** (module B+D) in compliance with the norms **ISO 4064**, **EN 14154** and **OIML R49**
- ❖ All models are certified for use with potable water in accordance with the Italian ministerial decree **D.M. 174** in compliance with the European Directive 98/83CE (Drinking Water Directive)
- ❖ All models may be supplied with data communication modules **for remote reading**, upon request

# SUPER DRY

pre-equipped for inductive modules

DN nominal size mm -inches		15 - 1/2*	20 - 3/4	
Q <sub>3</sub>	Permanent Flow rate	m <sup>3</sup> /h	2,5	4,0
Q <sub>4</sub>	Overload flow rate	m <sup>3</sup> /h	3,125	5,0
Q <sub>2</sub>	Transitional flow rate at measuring range R80 [MPE ±2%]	l/h	50	80
Q <sub>1</sub>	Min flow rate Q1 at measuring range R80 [MPE ±5%]	l/h	31,25	50
S	Starting flow at measuring range R80H	l/h	7	15
	Accuracy class		2	2
ΔP	Pressure loss class	bar	0,63	0,63
MAP	Maximum allowed working pressure	bar	16	16
	Dial register from/to	m <sup>3</sup>	0,0001 / 100.000	0,0001 / 100.000
A	Lenght without couplings	mm	110-80 115-170	130
	Lenght with couplings	mm	190-160 195-250	228
B	Maximum diameter	mm	72	72
C	Height with open lid	mm	138	143
D	Height with closed lid	mm	70	74
E	Height of tube	mm	16	19
	Weight with couplings	kg	0,660	0,840
	Weight without couplings	kg	0,500	0,600

\* Special model with body length 115 mm 3/4" x 3/4" or 3/4" x 7/8" threaded available upon request



## MODELS:

### Temperature class T30-T50

USF-P-8 WMB/15 DN 15  
USF-P-8 WMB/20 DN 20

### Temperature class T70-T90

USC-P-8 WMB/15 DN 15  
USC-P-8 WMB/20 DN 20

## OPZIONAL MODELS:

Model SUPER DRY with wired M-Bus module (see page 38)

### Temperature class T30-T50

USF-8/15 MB DN 15  
USF-8/20 MB DN 20

### Temperature class T90

USC-8/15 MB DN 15  
USC-8/20 MB DN 20

Model SUPER DRY with Wireless M-Bus radio module see page 5)

### Temperature class T30-T50

USF-8/15 WMB DN 15  
USF-8/20 WMB DN 20

### Temperature class T90

USC-8/15 WMB DN 15  
USC-8/20 WMB DN 20

The Company's policy is one of continuous product improvement and the right is reserved to modify the specification contained herein without notice. Illustrations are not binding. 06-22



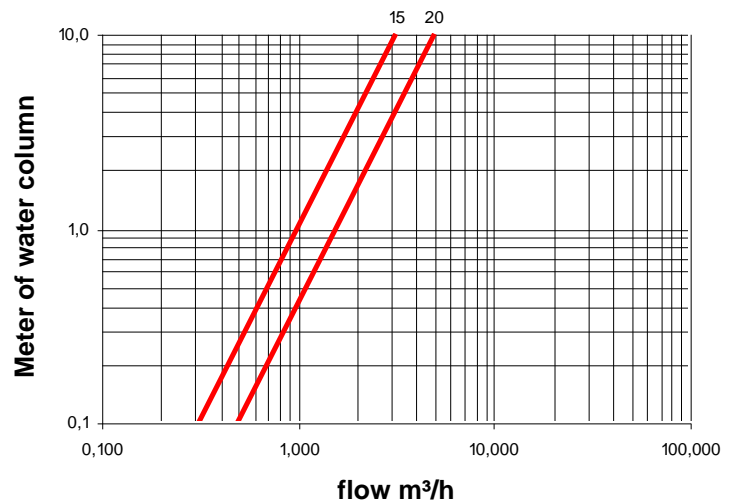
Please refer to specific technical data sheet pages 5-6

## AVAILABLE OPTIONS

- Non-return valve available upon request ;
- The serial number (also in "barcode" format) can be engraved on the dial;
- Chrome-plated version available upon request;
- Version with internal teflon-coated case for demineralized water available;
- All models can be supplied pre-equipped or fitted with inductive or Hall sensor
- All models can be supplied with radio module for remote reading based on LoRaWAN™ protocol for fixed network and LoRA protocol for walk-by/drive by, 868MHz Wireless M-Bus OMS.



## HEAD LOSS DIAGRAM



## TYPICAL ERROR CURVE

